

HotSpot Gateway



www.complex.com.sg - Connecting People...wirelessly.

Introduction

Internet access in high-traffic public facilities such as cafes, fast food restaurants and libraries is a growing phenomenon. In particular, Wi-Fi LANs offer unique capabilities that differentiates a retail outlet from other competing trade, helping to attract and retain increasing number of customers.

But public access networks bring with them a different set of challenges – subscriber acquisition, billing, security, device safety, installation obstacles etc – that offices and home Wi-Fi deployments don't face. With Compex's Wi-Fi and broadband wireless solutions, retail outlet owners and service providers can create robust cost-effective hotspots that guarantee an Internet connection for their customers at only a fraction of the price of high end hotspot solutions.

Performance

The NetPassage 28G Hotspot Gateway Solution is compliant with IEEE 802.11g and backward compliant with IEEE 802.11b standard. Embedded with Atheros chipset, it boasts network robustness and stability and wider network coverage. NP28G is capable of delivering performance of up to 15x faster than 802.11b, and high-speed data transmission of up to 108Mbps at 2.4GHz, offering a more satisfying connection experience.

Connectivity And Coverage allows several Compex Wireless devices to be linked up, thus wirelessly extending a network infrastructure to cover previously inaccessible places. There are also optional packages for external antenna connection support to improve signal coverage further.

Network and User Security

Most people are skeptical about accessing the internet through a public network, especially in a wireless environment where information can be easily snopped by unauthorised users. Threats and danger do exist in a public network, however, adequate prevention measures also exists to protect our valuable information and privacy. Compex's solutions integrates the unique Pseudo VLAN technology which ensures the privacy of every hotspot user through per user or per group segregation. URL filtering block users from accessing unauthorized websites which protects the network from potential threats.

USB Versatility

Its four USB2.0 ports can simultaneously support a variety of USB devices from printers to USB keypads for Hotspot Point-of-Sales applications.

Easy Customer Acquisition

Compex's solutions incorporates a variety of features that provides convenience for hotspot users such as the Static Address Translation (SAT), IP Plug & Play (PnP), Proxy redirection and DNS redirection feature that allows any user to connect to the Internet without having to alter any connection settings. SMTP redirection feature allows any networkable computer to access their normal emails without having to change any mail configurations and the convenience of no complicated billing process, credit card/ authorization or user- registration makes it an even more preferred solution for venue owners and hotspot users.

Versatile login modes

Compex's hotspot solution integrates 4 different modes of login function for the user. The administrator can select either a Free Access login which allows any user to login, a Paid login which allow only users with a assigned access key to login, a Terms and Condition login whereby users have to agree to certain regulations in order to be given access into the network or the Radius Server Authentication login which allow subscribers of ISPs to make use of their username and password to login.

Wall Garden Feature

Compex's solution also incorporates the Walled-Garden feature which allow the users without any billing access to surf certain websites specified by the administrator. This is especially useful for marketing any events or promotions offered by the outlet. A customizable Splash Page with login function will be displayed on every user's computer upon activation of their internet browser. Once login, a countdown timer will be displayed for users to keep track of their remaining access duration.

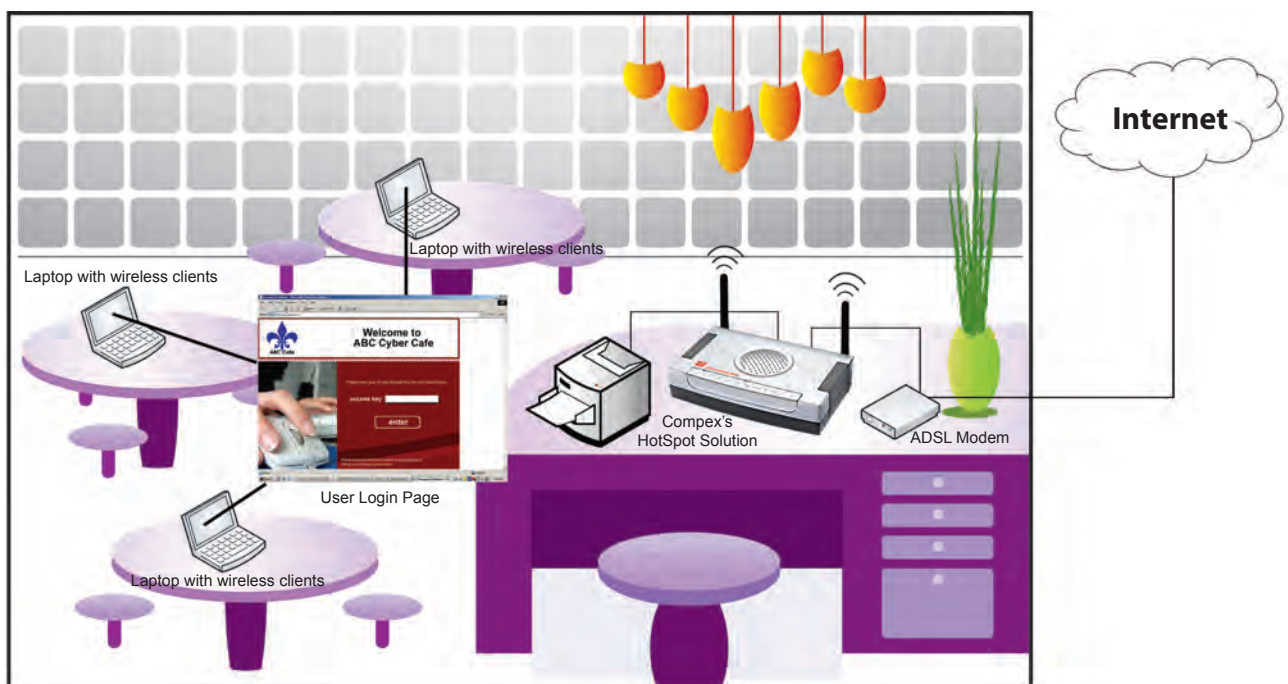
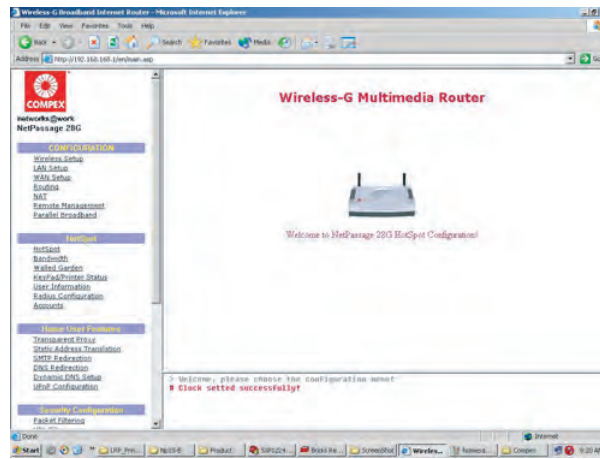


Illustration of a HotSpot solution deployed in a cafe environment.

Easy Administration and Management

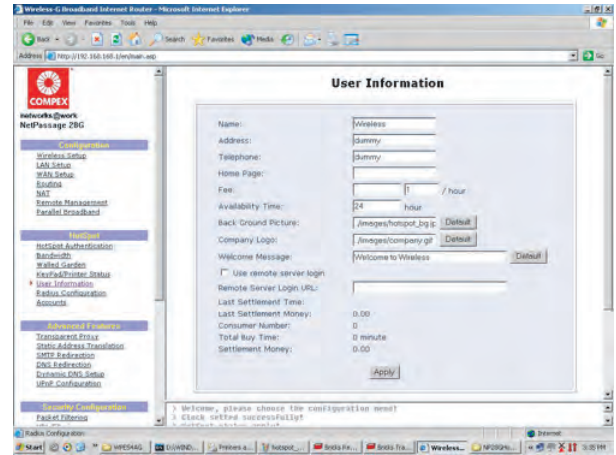
Administrator can make use of a user-friendly web management page to allow the shop owner to manage user accounts and the hotspot establishment in a more efficient manner. Multiple user accounts can be autogenerated to be printed into prepaid cards to be sold at the outlet. A billing summary can be generated at the end of every day to tabulate the sales generated from this service. Administrators will also be able to manage individual accounts such as adding additional time, deleting of account etc.



NetPassage 28G HotSpot Solution features a user-friendly web management page for easy configuration and management of the HotSpot establishment.

Service Differentiation for A Wide Range of Venues

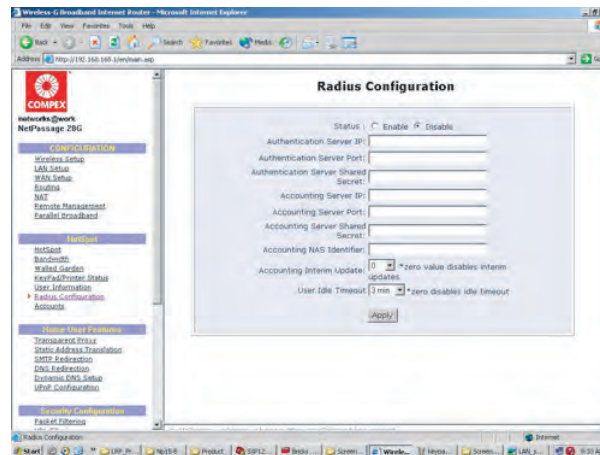
Compex's wireless Hotspot Gateway solution offers hotspot operators of all type and sizes, an opportunity to increase customer spending on existing services and products, and to generate new revenue. With Compex's hotspot solutions, venue owners can affordably offer wireless internet access in a wide variety of places. With Hotspot penetration rate less than 1% of total potential in the world today. Venue owners have plenty of room to use Wi-Fi services as a way to differentiate themselves from the competition. With Wi-Fi hot spot deployment expected to accelerate, revenue will also greatly increase for venues equipped with such solutions. With Compex's affordable hotspot solutions, it becomes easy for venue owners to gain maximum differentiation for their businesses.



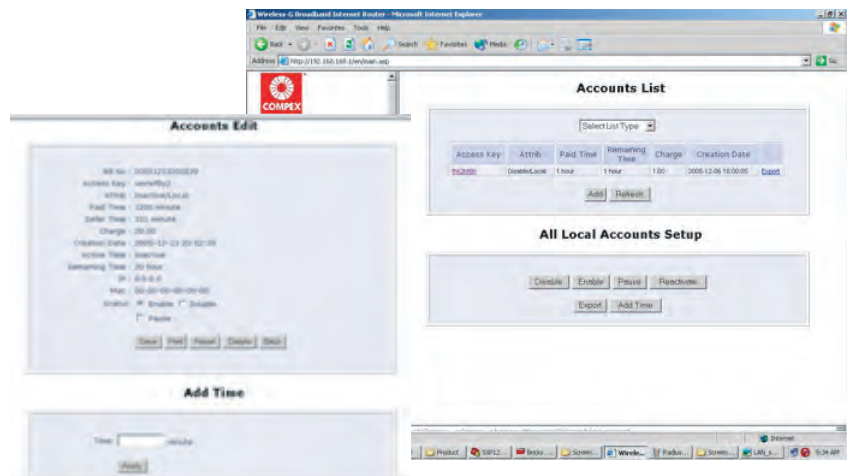
Administrators can insert their own company logo or even background picture for the HotSpot splash page to create a unique identity for the outlet.

Hot Spot Solution Advantages:

- Differentiat businesses from other similar trade thus increasing traffic and revenue
- Auto-configures connection to each user's settings for effortless access
- Easy to deploy with low cost of implementation
- Support for multiple security schemas for maximum protection
- Retain existing and attract new customers with value added service
- Radius Server support for fast and secured user authentication
- Auto-generation of billing summary



The Radius Configuration settings allows easy connection to a radius server for fast and secured user authentication.



Creating multiple accounts is a breeze with the Accounts Management feature. Administrators can also manage individual accounts such as adding additional time, deleting the account etc.

Description	Specification
Standards	IEEE 802.11g - 108Mbps, 54Mbps, 48Mbps, 36Mbps, 24Mbps, 18Mbps, 12Mbps, 9Mbps, 6Mbps IEEE 802.11b - 11Mbps, 5.5Mbps, 2Mbps, 1Mbps
Speed	Atheros' Super-G with eXtended Range - Speed up to 108Mbps
Frequency Range	2.400 - 2.4835GHz 2.400 - 2.497GHz
Antenna Type	2dBi SMA connector Antenna type (Optional 5dBi Antenna available)
HotSpot Features	<ul style="list-style-type: none"> ◆ Printing of unique access key feature for individual user. ◆ No complicated billing process, credit card authorization or user-registration. ◆ User-friendly administrator's page allows the shop owner to keep track of traffic flow and the usage duration for easy management of the HotSpot establishment. ◆ Static Address Translation (SAT), IP Plug & Play (PnP), Proxy redirection and DNS redirection feature allows any user to connect to the Internet without having to alter any connection settings. ◆ SMTP redirection feature allows any networkable computer to access their normal emails without having to change any mail configurations. ◆ Walled-Garden feature allows users without billing access to surf specific sites ◆ Login/ logout page with countdown timer for users to keep track of their remaining access duration. ◆ URL Filtering block users from accessing unauthorized websites ◆ Customizable Splash Page to insert Company's logo ◆ Multiple User Account Creation ◆ Auto-Generation of Billing Summary ◆ Supports up to 256 User Accounts ◆ iPASS support available in Q2 2006. ◆ Free Firmware Upgrade from Compex website <p>4 modes of access:</p> <ul style="list-style-type: none"> - Hotspot Billing Access - Radius Server Authentication - "Terms & Conditions" access - Free Access
Advanced Features	Parallel Broadband (in Gateway mode using WDS) Telnet Command Console HTTP Web-Management Wireless Pseudo VLAN Secure Socket Layer (SSL) Stateful Packet Inspection Firewall (SPI) IP Logging, URL Filtering
Requirements	ADSL Broadband Connection
Physical Ports	1 x 10/100 auto-negotiating WAN Port with Auto MI/MDI-X Ethernet based 3 x 10/100 auto-negotiating RJ45 Port with Auto MDI/MDI-X Ethernet-based 4 x USB 2.0 Ports
Security	WPA-PSK, 64-bit or 128-bit WEP Wireless Pseudo VLAN
Power Requirements	Input Voltage: 5 VDC, 2A (MAX)
Output Power	802.11b: 20dBm 802.11g: 19dBm
Certifications	Emissions: FCC part 15 Class B, CISPR 22 EN55022 Class B EN55081-1, EN61000-3-2, EN61000-3-3 Immunity: EN55024 (IEC 61) FCC Part 15 Sub Class B, CE & R&TTE CE Mark, EN60950

Compex Systems Pte Ltd

135 Joo Seng Road PM Industrial Building #08-01 Singapore 368363

tel: +65 6286 2086 fax: +65 6280 9947 email: sales@compex.com.sg website: www.compex.com.sg

Compex Inc.

840 Columbia Street Suite B Brea, CA 92821

tel: 714.482.0333 fax: 714.482.0332 email: sales@cpx.com website: www.cpx.com